

Becoming a member of a European Network

Why bother?

Presented by

Kim Smouter

ENNA Secretary General

Outline of the presentation

- **Objective of the Presentation**
- **Why does Brussels matter in plain language?**
- **How does Brussels work in plain language?**
- **Introducing European networks**
- **Benefits of Membership**
- **Responsibilities of Membership**
- **Does it make sense for me?**

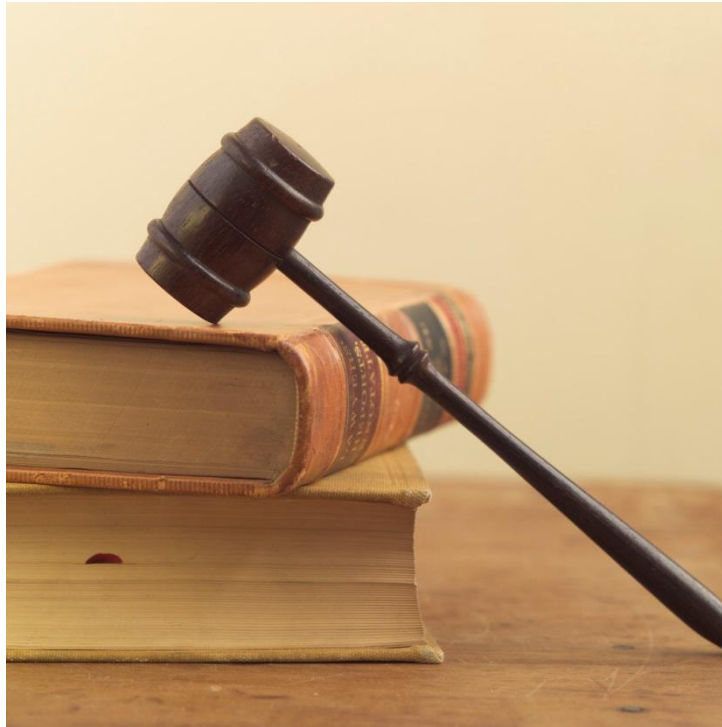
Objective of the presentation

This presentation aims to:

- **Consider why Brussels should be on your radar**
- **Help explain how Brussels work**
- **Explain the entry point that is a European network**
- **Consider the advantages and disadvantages**
- **Help you decide whether its an adventure for you**

Why does Brussels matter?





Why does Brussels matter?

70% of our national laws are conceived in Brussels



Why does Brussels matter?

Rules adopted in Brussels affect every level of government!



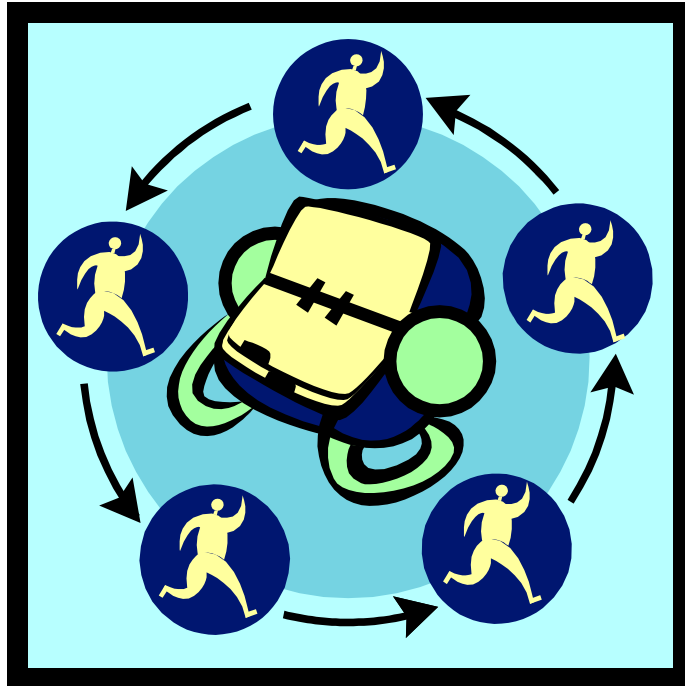
Why does Brussels matter?

Brussels is an important source of funding for local communities



Why does Brussels matter?

Brussels is a unique hub of policy-making for governments,
business, and the non-profit sector as well



Why does Brussels matter?

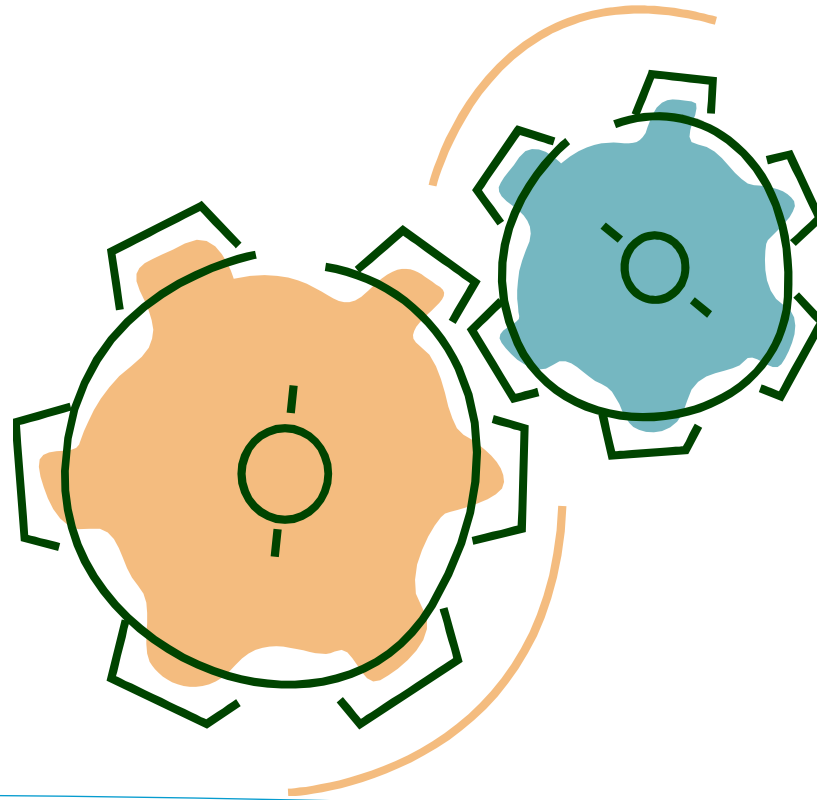
A place where networking and making contacts is a daily occurrence



ALL OUR ORGANISATIONS ARE IMPACTED

**BY THE DECISIONS MADE IN BRUSSELS BY POLICY-
MAKERS**

How does Brussels work?





How does Brussels work?

Several European institutions adopt new policies, budgets, rules



How does Brussels work?

Some European institutions exist to advise or enforce the rules

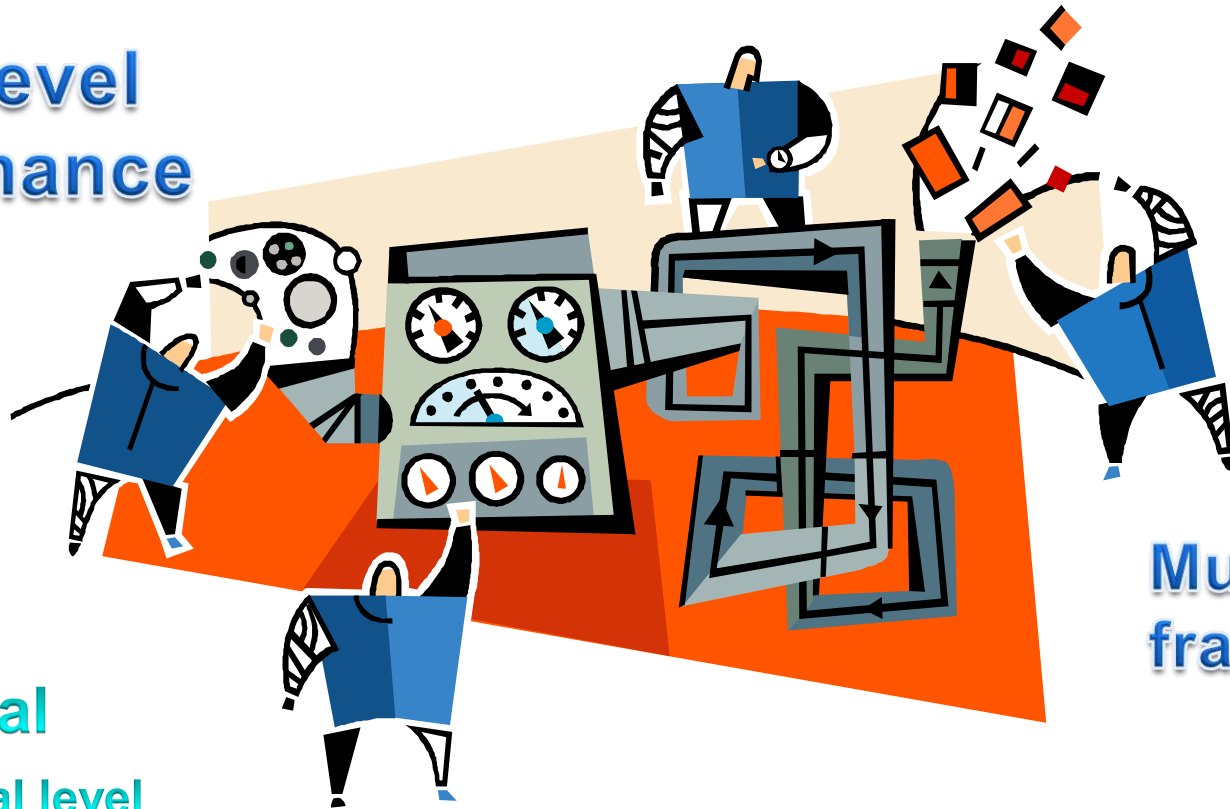


How does Brussels work?

The Commission monitors implementation of decisions, EU resources

Europe is a complex machine

Multi-level
governance



Commission

Council

Parliament

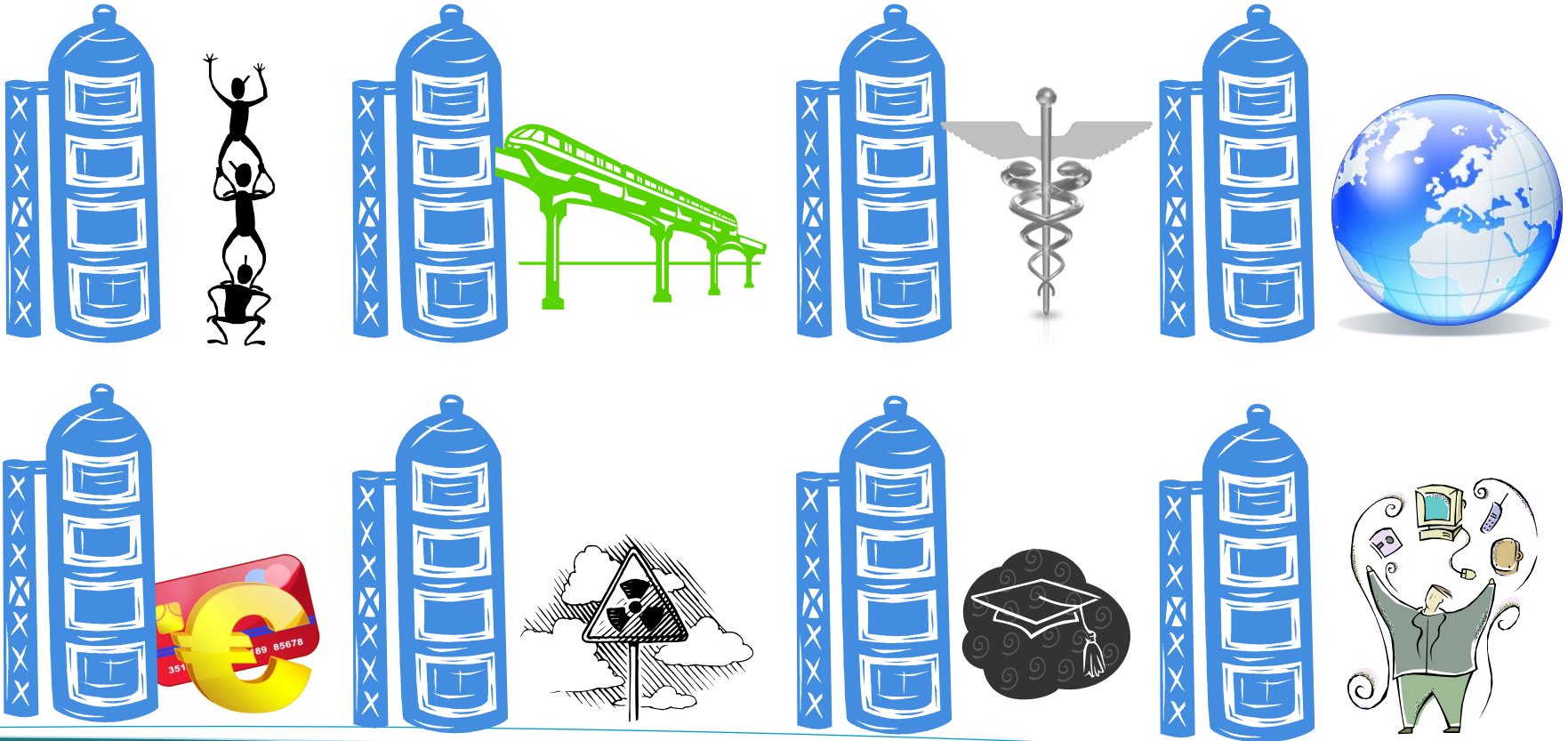
CoR

EESC

Multi-institutional
framework

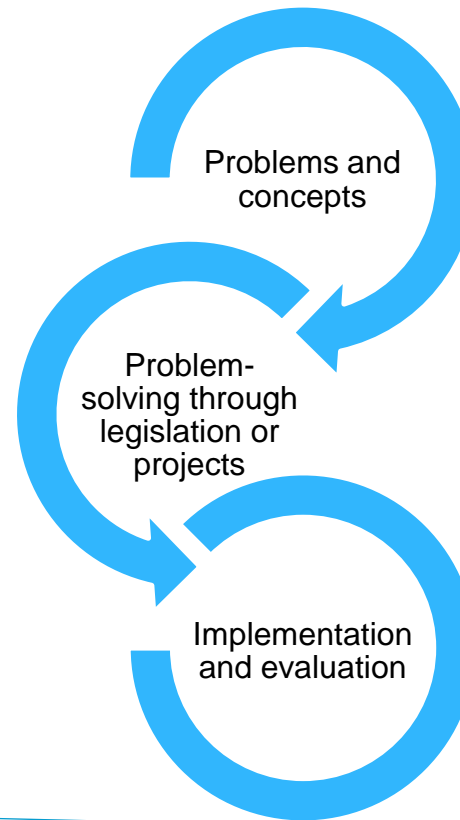
National
level
Regional
level
Local level

Both Complex and Disjointed



How does Brussels work?

- **Multiple actors**
- **Complex**
- **Deliberative policy making**
- **Compromise central credo**
- **Vigilance and presence key**

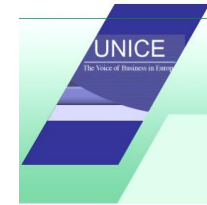


Brussels – Is it Worth it?

- **It can be useful if you're looking for:**
 - Inspiration from outside your borders
 - Funding for innovative actions
 - Influencing policies at all levels
 - Raising awareness of your challenges
 - Raising awareness of the work you do

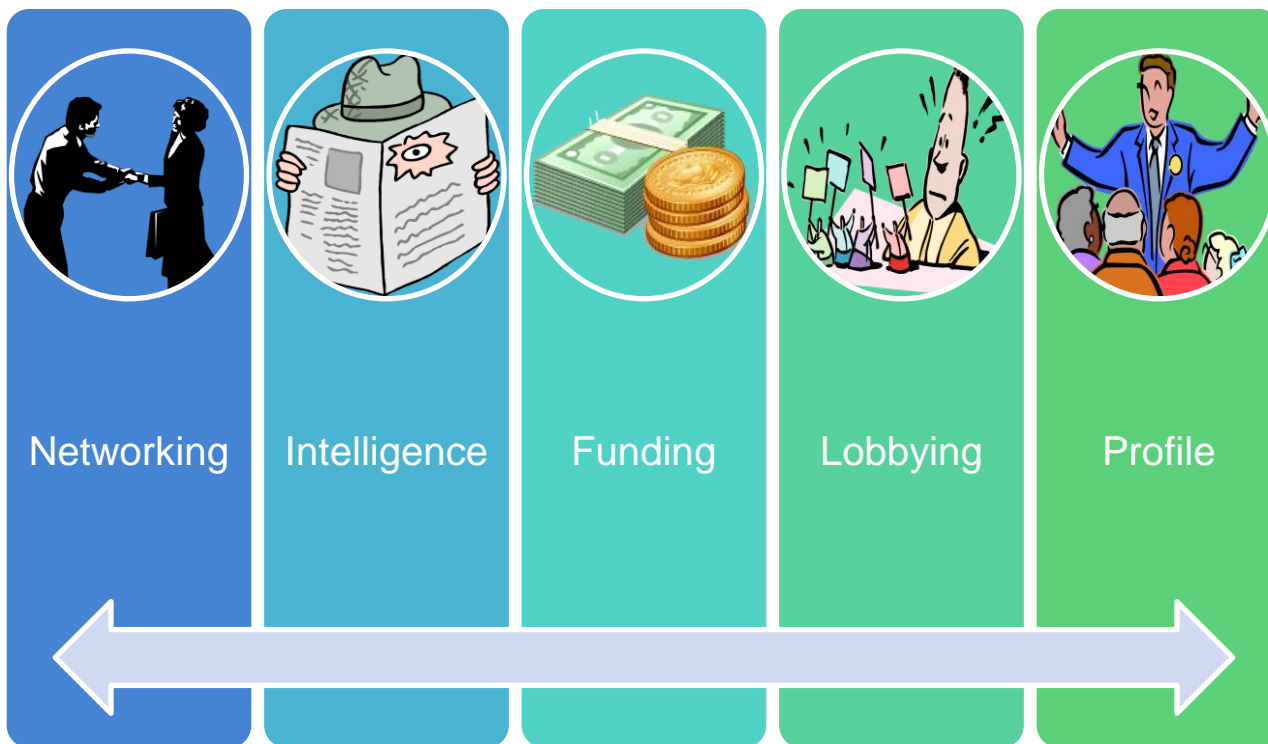


EUROPEAN NETWORKS HELP TO ENSURE
THAT THE TIME YOU INVEST IN THE EU IS WORTH IT...



Introducing European Networks

There are hundreds of European Networks, representing all sectors of life



Networking

Intelligence

Funding

Lobbying

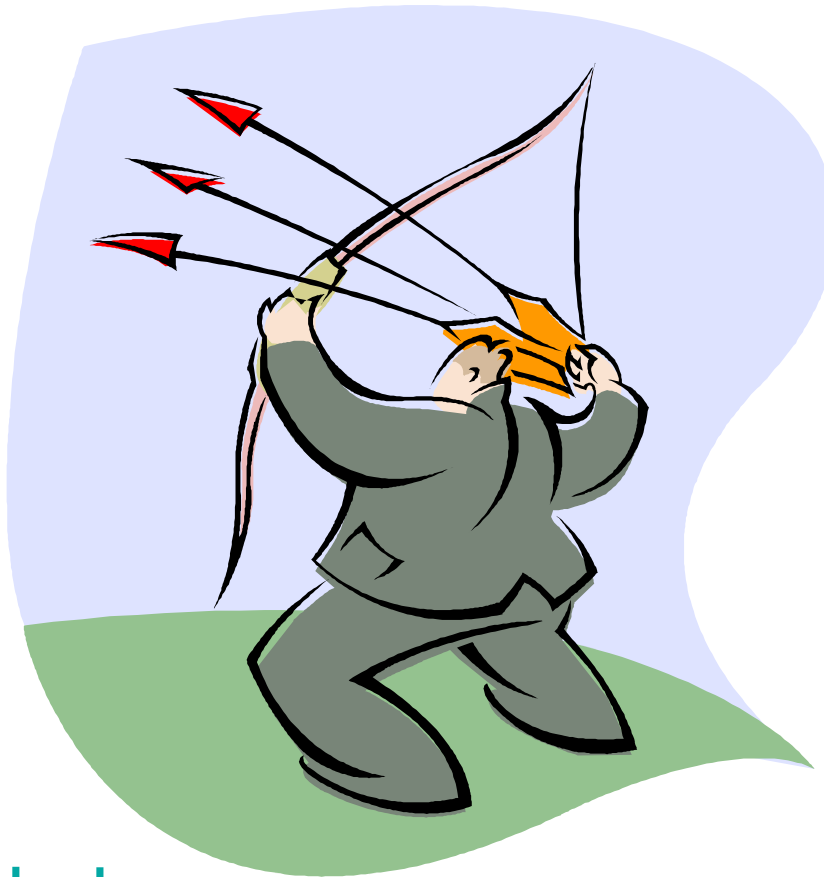
Profile

The key roles of European Networks

Cost-Effective Access and Influence in Brussels

Advantages of EU Networks

- **Networks offer:**
 - Cost-effective ways to ‘be’ in Brussels
 - A permanent space to meet peers
 - Dependable information points on EU questions
 - ‘Strength in Unity’ for policy lobbying purposes
 - Support to access and understand EU funding



In short...

**A FUNCTION NETWORK CAN BE YOUR BEST ALLY IN
BRUSSELS TO ACHIEVE YOUR OBJECTIVES**

Obligations of Members



Commitment to
the Network's
Objectives



Financial
Investments
through fees and
participation costs



Time investments
to contribute to
the activities of
the Network



An expertise at
your level of
operation is
critical





In short...

**A NETWORK IS AS STRONG AS ITS MEMBERS' COMMITMENT
TO IT**



Does it make sense for me?

It's not for everyone, but for some it makes a world of
difference

Things to consider

- **Membership isn't something for everyone**
- **Requires commitment of whole organisation**
- **Participation costs incurred**
- **Brings cost-savings vs. permanent presence**
- **Research your network well**



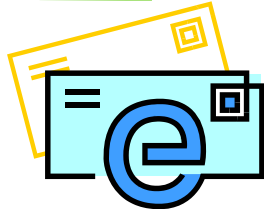
**For many, joining a Network proves to be
an experience that transforms and energizes an organisation**

Thank you for your attention!

- **Any...**



For more information:



- www.enna-europe.org
- secretariat@enna-europe.org
- [+32\(0\)-25-37-47-22](tel:+3225374722)